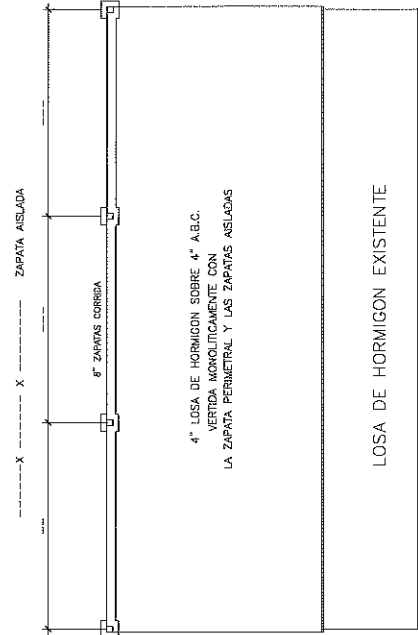
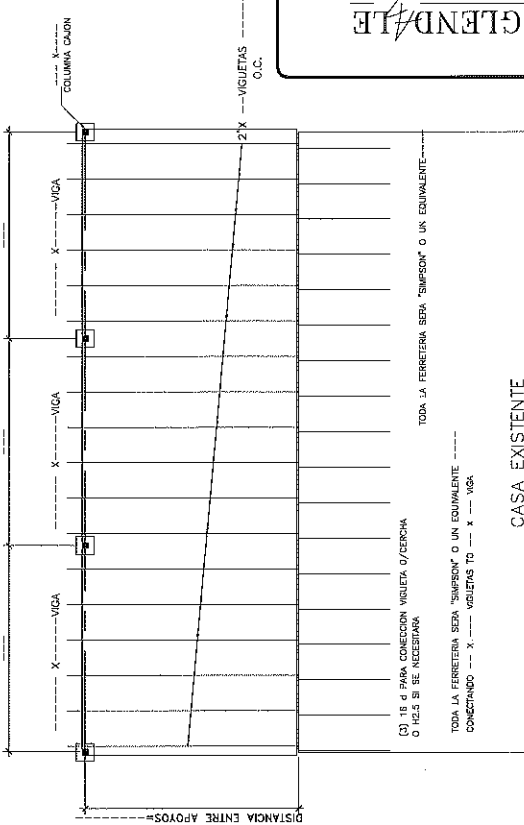


TODA LA FERRETERIA SERA "SIMPSON" O UN CONECTOR EQUIVALENTE
 2"X --- VIGUETA A LA --- VIGA



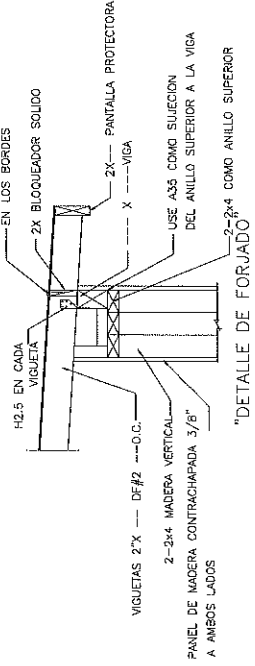
4" LOSA DE HORMIGON SOBRE 4" A.B.C.
 VERTIDA MUY CUIDADAMENTE CON
 LA ZAPATA PERIMETRAL Y LAS ZAPATAS AISLADAS

LOSA DE HORMIGON EXISTENTE



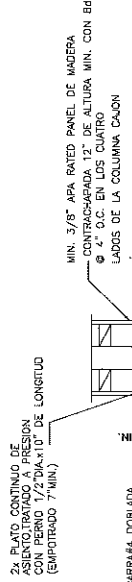
CASA EXISTENTE

PLANTA DE: LOSA DE HORMIGON, CUBIERTA & FORJADO
 USAR CLAVOS 8 d 6" O.C.
 EN LOS BORDES
 2X BLOQUEADOR SOLIDO



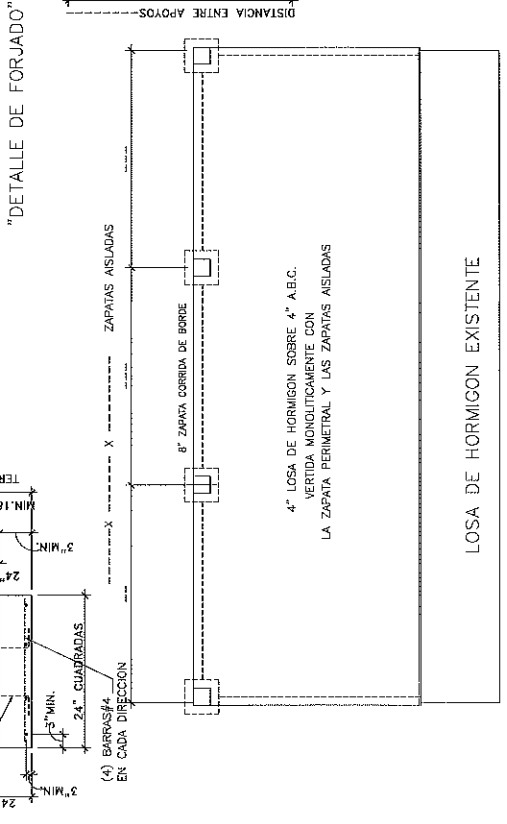
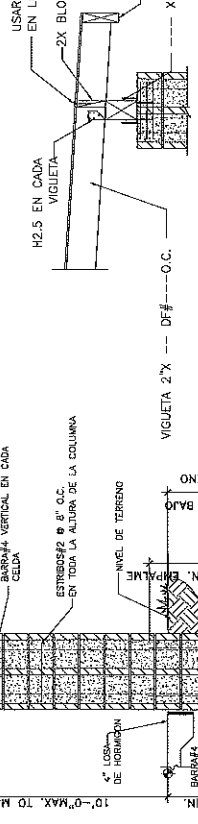
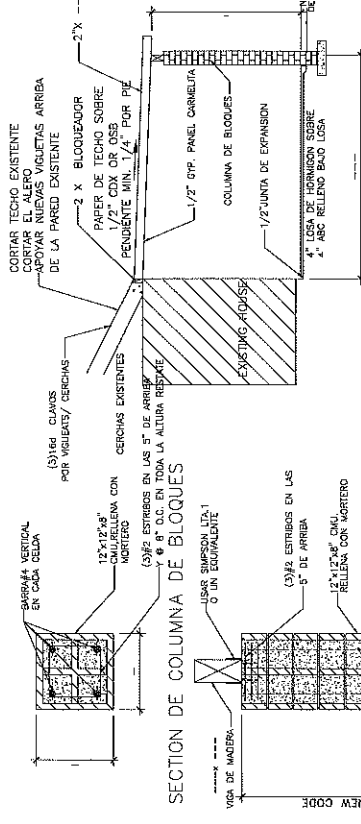
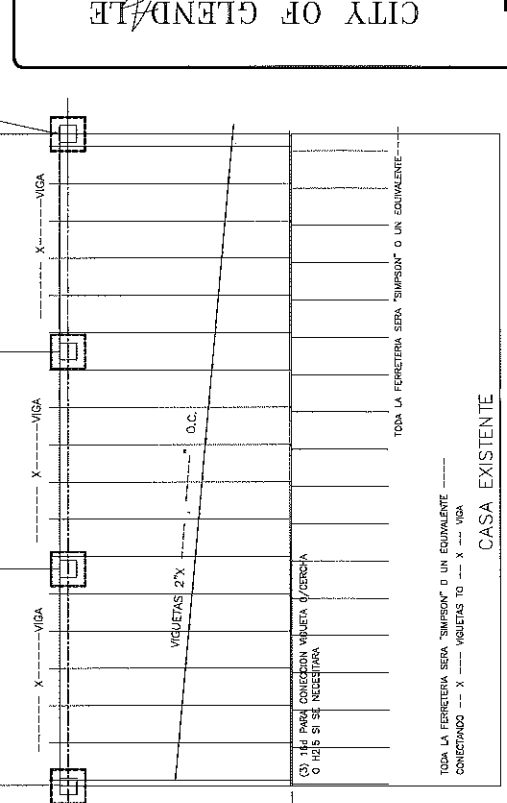
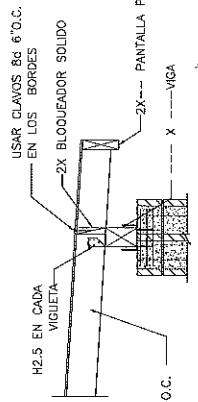
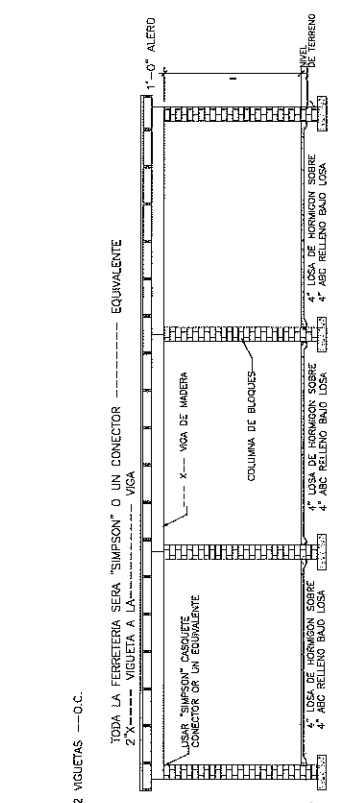
"DETALLE DE FORJADO"

PLANTA DE: LOSA DE HORMIGON, CUBIERTA & FORJADO



DETALLE DE ZAPATA AISLADA
 CON ZAPATA CORRIDA

(O.C.) = CENTRO A CENTRO



PLANTA DE: LOSA DE HORMIGON, CUBIERTA & FORJADO

PLANTA DE: LOSA DE HORMIGON, CUBIERTA & FORJADO

(O.C.)= CENTRO A CENTRO

CASA EXISTENTE

LOSA DE HORMIGON EXISTENTE

