

The Economic Engine

of the West Valley

Glendale at a Glance



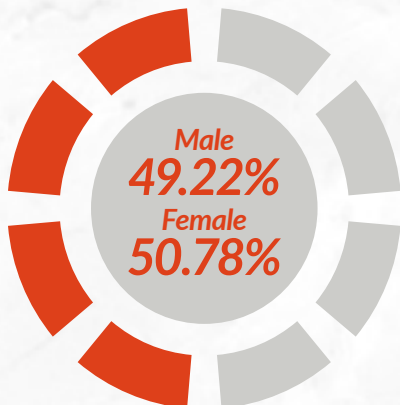
Population Estimates
2016: 245,895
2050: 343,800

Employment Estimates
2016: 97,200
2050: 206,900

\$66.9K
Mean HHI

35.2
Median Age

More than half of Maricopa County population growth will be in West Valley over the next 25 years!



Glendale is accessible to a workforce of
1.7 million
within a 30-minute commute



Year over year
3,455
more people
joined the
labor
force in
Glendale

Currently in Development



3,256

new residential lots are under development in Glendale!



2.5 million

square feet of commercial projects under construction in the City of Glendale



4.2 million

additional commercial/ industrial square feet in planning stages

Here We Grow Again!

Development Highlight



*Opening
September 2018
In the Glendale Sports and
Entertainment District*

Glendale's Got Talent!

Featured Sector:

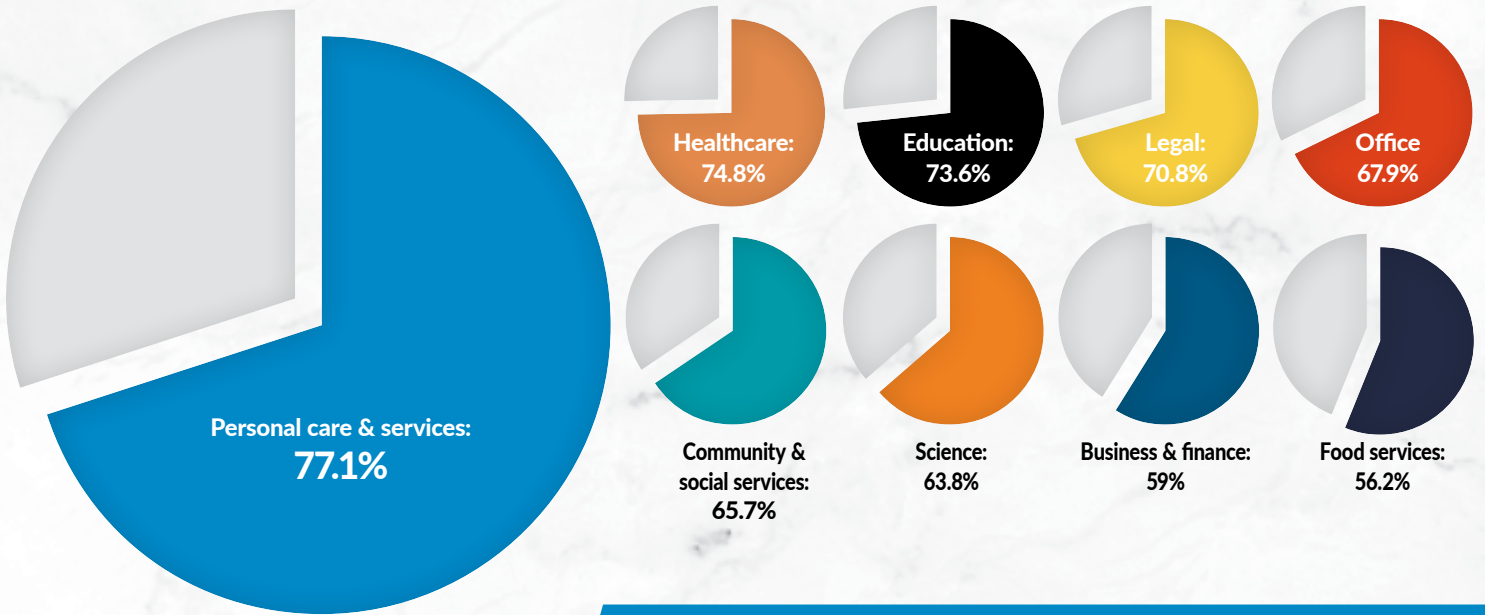
Women in Business



When it comes to great talent, Glendale has got it!
Many occupations that are held by Glendale residents
are a majority represented by women!

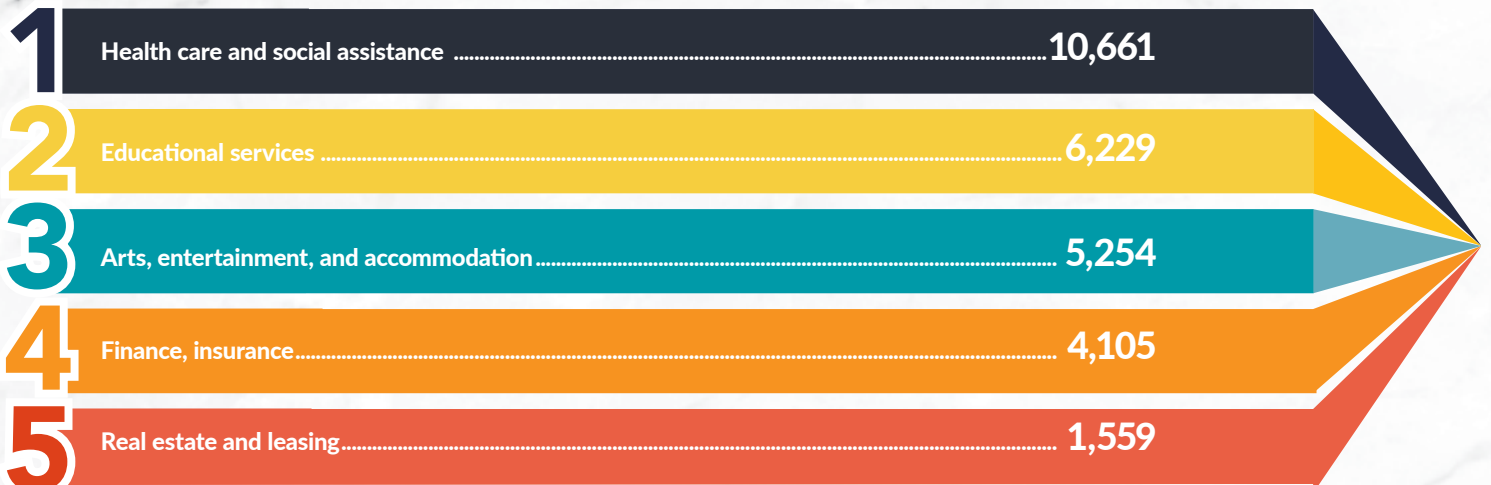


Percentage of female Glendale residents by Occupation



And when it comes to working in Glendale, women are a majority represented in many of the city's key industries too!

Leading industries in Glendale Where Female Employees are the Majority



Grow With Glendale

Team Glendale is committed from the first hello to certificate of occupancy and beyond, together wherever the journey leads us.



The Office of Economic Development's mission is to connect business, government and community. These partnerships will continue to spark exciting new development and generate a high quality of life for Glendale residents.

**If you have any questions about Glendale Economic Development,
kindly contact us via Business@glendaleaz.com.**

Sources: U.S. Census Bureau 2015 and 2016 American Community Survey Estimates, 2016 Maricopa Association of Governments, Arizona Office of Economic Opportunity 2017 Local Area Unemployment Statistics and Economic Modeling Specialists Inc.