

Glendale Arts & Culture

..... Glendale, Arizona
October, 2009

The City of Glendale's monthly arts & culture e-newsletter is designed to keep you up-to-date on our upcoming events and programs. With each issue we feature public artworks and cultural attractions and events not to miss.

New Exhibition at the Bead Museum

Put the Bead Museum's **From Caves to Castles** on your calendar! This exhibition features the private collection of ancient beads and beaded artifacts of museum founder Gabrielle Liese. Beads have been a universal part of the human experience since the beginning of civilization. They are found in every culture and country across the globe from ancient times to the present.

From Caves to Castles covers Prehistory (early hominid-caveman era) until the end of the Islamic Period (1400 AD) and probes the question of why beads are an important pathway to understanding human culture. From the simple shell beads of early hominids to the complex glass beads of the Islamic era, visitors will experience the bead story from around the globe and through time. Significant events and turning points in history will be explored from the perspective of beads. The exhibit will use architectural effects like a pyramid, tombs, and archaeological dig, cave art, philosophers and rulers. It will also be presented with humor and interactive whimsy (If this bead could talk-the stories it would tell!). Watch for the announcement of dates for the speaker series for From Caves to castles.

The Bead Museum is the first and largest museum in the world dedicated to the collection, preservation, research, and interpretation of beads and related artifacts. Its mission is to foster the appreciation and understanding of the global historical, cultural and artistic significance of beads and related artifacts by means of collection, documentation, preservation, education and exhibition. Its goals are to serve as a permanent repository for beads, beaded art and related books and publications. Housing more than 100,000 beads and beaded artifacts, The Bead Museum takes visitors on a journey of discovery of various world cultures, history, geography, anthropology and of course, art. Located at 5754 West Glenn Drive in Glendale, Arizona, The Bead Museum offers guided tours, beading classes, educational workshops and an extensive research library. The Museum is located at 5754 W. Glenn Drive in downtown Glendale. For more information, please call 623.931.2737 or visit www.beadmuseumaz.org.



Above:
Egyptian Face
100-0 BC;
left: Etched
Carnelian
100-600 AD -
Afghanistan

● Glendale's 2009 - 2010 Performing Arts Program

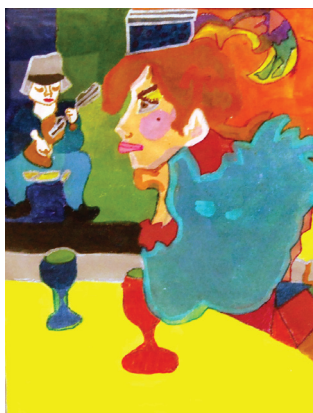
The following projects were recommended by the Arts Commission and approved by the Glendale City Council on August 11. Look for dates and times of upcoming events in future issues of this newsletter:

- Foothills Branch Library to support "Around the World in Eighty Days", dance, music and artistry workshops
- Arizona Broadway Theatre for two performances held in Main Library's auditorium
- Arizona Theatre Company to support the artists in residence program for students at Mountain Ridge High School showcasing the work of William Shakespeare
- Ballet Arizona for the "Ballet Under the Stars" free outdoor performance at Sahuaro Ranch Park Historic Area and artists in residence at Don Mensendick Elementary School
- The Bead Museum to support the 2009-2010 public lecture series for the special exhibition "From Caves to Castles," which opened in September 2009
- Center Dance Ensemble for "Poetry in Motion," a series of 9 lecture-demonstration dance performances to be held for the student body, parents and friends at Challenger Middle School & Sunset Vista, Desert Garden & Glenn F. Burton Elementary Schools; Deer Valley School District for a series of workshops for band students and performances for the student body at Desert Sky Middle School
- Phoenix Conservatory of Music for "Bicentennial Around the World!" a year-long after school music program presented at Bicentennial South Elementary School
- Phoenix Symphony for presenting the "Classroom Concert Series" at Desert Garden Elementary School
- Scottsdale Cultural Council for presenting the "Arizona Wolf Trap" arts programs for preschoolers and workshops for teachers at Coyote Ridge, Desert Garden, Isaac E. Imes and Landmark Annex Schools
- West Valley Arts Council for presenting "The Big Read" literary arts series at Glendale's libraries

For more information on Glendale's Arts programs, call 623.930.3520 or visit www.glendaleaz.com/arts/.

● Current & Upcoming Events

- Currently, at the Glendale Adult Center is **PSA Art Awakenings'** annual group exhibition. The exhibition shows through October 30. Location: 5970 W. Brown Street. For more information on exhibitions, call J. Gibran Villalobos at 623.930.3547 or jvillalobos@glendaleaz.com. Free.
- **New membership Drive:** The Glendale Arts Council is looking for new members to participate in its annual fine arts juried show. Meet new people, work with artists, and join our projects. If you are interested, meet us at the Glendale Adult Center on November 10 at 7 p.m. in Room 102. For details, call J. Gibran Villalobos at 623.930.3547 or jvillalobos@glendaleaz.com.



Artwork from PSA
Art Awakenings
Above: Girl in Curls;
left: Faux Van Gogh

Arts and Culture
City of Glendale
5959 West Brown Street
Glendale, Arizona 85302
623.930.3547
jvillalobos@glendaleaz.com
www.glendaleaz.com/arts



Visit www.showup.com, the website showcasing the greater Phoenix region's upcoming arts and cultural events, programs and venues.